

Design for Health

Health Impact Assessment: Threshold Analysis

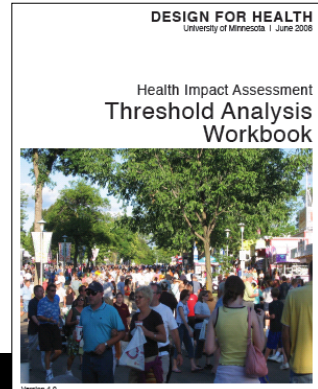


Design for Health
January 2010

www.designforhealth.net

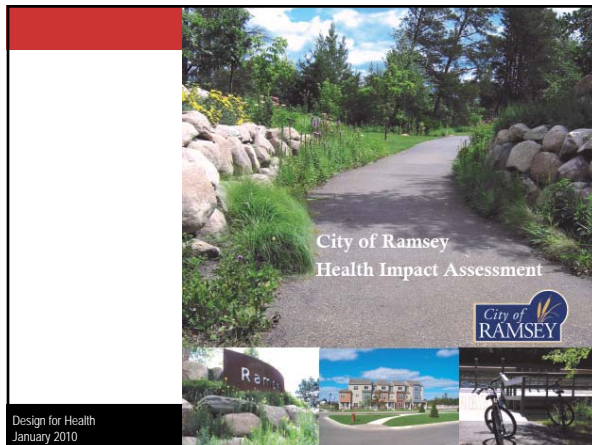
Characteristics of the Threshold HIA

- Level III: Most specific in the suite of HIA tools provided by Design for Health.
- Informed by synthesizing and digesting available research.
 - What does the “research tells us”
 - How strong/clear is that research
 - How can it be applied to more specific projects or plan proposals



Design for Health
January 2010

Version 4.0



Design for Health
January 2010

Design for Health
Health Impact Assessment Threshold Analysis Workbook
Version 4.0

Contents

Background: Design for Health HIA Threshold Analysis.....	4
How to Use the Design for Health HIA Threshold Analysis Workbook.....	4
Step 1: Preliminary Assessment.....	5
Step 2: Threshold Analysis Workbook.....	6
HIA Threshold Analysis Score sheet.....	7
Topics.....	8
Topic: Accessibility.....	8
Topic: Air Quality.....	11
Topic: Environmental and Housing Quality.....	13
Topic: Food.....	14
Topic: Mental Health.....	15
Topic: Physical Activity.....	16
Topic: Safety.....	18
Topic: Social Capital.....	20
Topic: Water Quality.....	21
Appendices.....	23
Appendix 1: Evidence Required.....	23
Appendix 2: Caveats for HIA Threshold Analysis.....	25
Appendix 3: Building a Network and Street Distance Buffer in Arc GIS version 9.2.....	28
References.....	33

Structure of the Threshold HIA

- Uses same categories of public health categories as other tools in the Design for Health HIA suite
- Further breaks these areas down into 20 or so specific criteria
- Requires specific knowledge of the plan or project (e.g., specific information or characteristics about plan element or development proposal)
- Scoring is based on sliding scale

Design for Health
January 2010

www.designforhealth.net

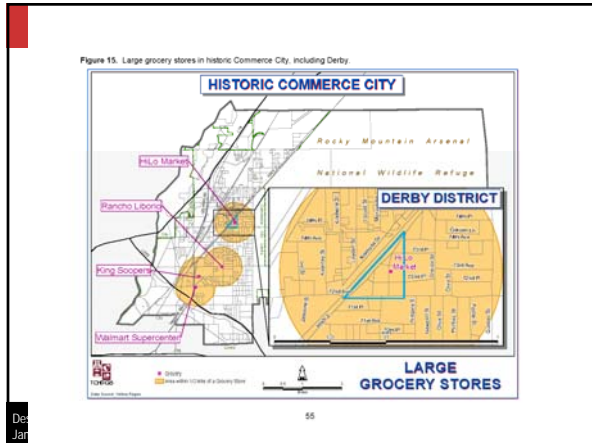
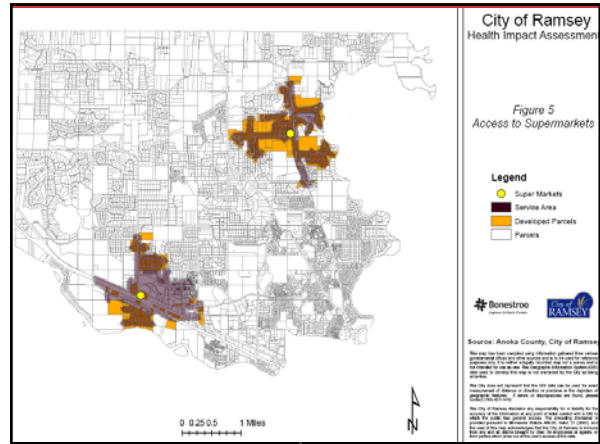
Topic: Food –	
<i>Distance to a supermarket or fruit and vegetable shop (Threshold)</i>	
<i>Intent</i>	Provide access to fruits and vegetables.
<i>Rationale</i>	Studies show distances to supermarkets have the clearest effects on health. We also assume that fruit and vegetable stores would have similar benefits.
<i>Requirements</i>	Supermarkets or fruit and vegetable stores within 1600 m (1 mile) of all residential areas.
<i>Definitions</i>	A supermarket or fruit and vegetable store is a farmer’s market or an establishment with a NAICS code of 445110 or 455230.*
<i>Submission</i>	Map showing the location of existing (or proposed) supermarket or fruit and vegetable stores, and a 1600 m network buffer around each (easily done using the “generalize” buffer in ArcGIS 9.2 and later versions).
<i>Credits Available</i>	12 points: Entire developed area is covered by the buffer. 8 points: If 50% of the developed area is covered by the buffer. 5 points: If 25% of the developed area is covered by the buffer. 1 BONUS point: There is a farmer’s market (during summer months) within the buffer area.
<i>Credits Awarded</i>	

Food Stores--NAICS Code Examples

- **445** Food and Beverage Stores
 - **4451** Grocery Stores
 - **44511** Supermarkets and Other Grocery (except convenience) Stores
 - **44512** Convenience Stores
 - **4452** Specialty Food Stores
 - **44521** Meat Markets
 - **44522** Fish and Seafood Markets
 - **44523** Fruit and Vegetable Markets
 - **44529** Other Specialty Food Stores
 - **445291** Baked Goods Stores
 - **445292** Confectionery and Nut Stores
 - **445299** All Other Specialty Food Stores
 - **4453** Beer, Wine, and Liquor Stores

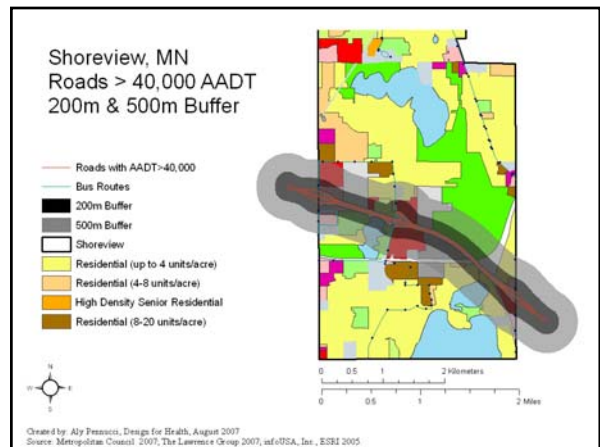
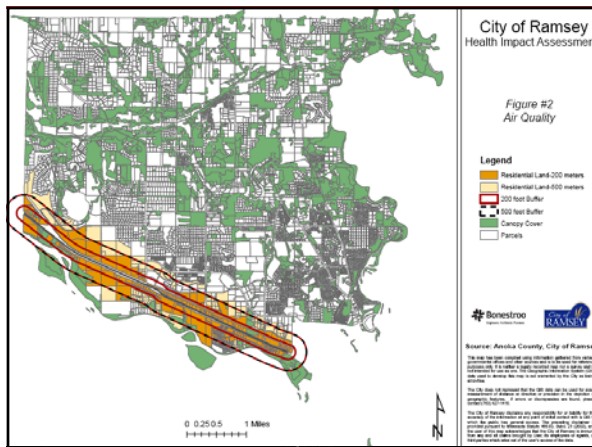
Design for Health
January 2010

www.designforhealth.net



Des
Jan

Topic: Air Quality - Distance from a freeway for residential uses and uses occupied by children (Threshold)	
Intent	Prevent respiratory diseases and premature births.
Rationale	Studies show decreasing particulates, respiratory diseases and premature births as distance from major roads increases. Residential areas, schools and playgrounds are key environments for sensitive populations.
Requirements	Residential areas, schools, day care facilities, playgrounds and sports fields should be more than 200 m (656 ft) from a major road.
Definitions	A major road is defined as having an average annual daily traffic (AADT) > 40,000, a freeway or a road with six or more lanes. Uses occupied by children include schools, day-care facilities, playgrounds and sports fields. Canopy refers to the horizontal extension of a tree's branches in all directions from its trunk.
Submission	Comprehensive plan map or site plan that depicts relevant land uses: (a) all roads in the area with AADT > 40,000, (b) a 200 m (656 ft) buffer from each major road, and (c) a 500 m (1640 ft; 1/3 mile) buffer from each major road.
Credits Available	9 points: There are no residential uses, schools, playgrounds, sports fields, and day care facilities within 500 m of a major road and the buffer area has complete canopy. 7 points: Same as above but the buffer lacks tree canopy. 4 points: There are no residential uses, schools, day care facilities, playgrounds, and sports fields within 200 m of a major road. 2 bonus points: If there is 50% tree canopy in entire study area.
Credits Awarded	



Threshold Analysis (Draft)- Score sheet						
Topic, Threshold or Association	Credits available				Total credits available	Credits Awarded
Topic: Accessibility					18	
Transit service (Threshold)	9	7	4	2	9	
Transit stops (Threshold)	9	6	3		9	
Topic: Air Quality					18	
Distance from a freeway for residential uses and uses occupied by children (Threshold)	9	7	4	2*	9	
Polluting uses (Association)	6				6	
Air quality mitigation (Association)	3	1			3	
Topic: Environmental and Housing Quality					7	
Minimize exposure to lead (Association)	7				7	
Total Credits--Potential and Awarded					100	

TOPIC	HIA THRESHOLD	CURRENT ACHEIVEMENT	GOAL	POLICY DIRECTIONS
Accessibility	<ol style="list-style-type: none"> Residential Density at 4u/acre. Employment and Residential uses within ¼ mile of hourly transit service. 	<ol style="list-style-type: none"> At build out, density will be ~ 3u/acre. No transit service in the City currently. 	Encourage dense Residential Development in appropriate Locations to capitalize on transit service	<ol style="list-style-type: none"> Implement the plan for Town Center Secure a stop on the Northstar Commuter Rail Line
Air Quality	<ol style="list-style-type: none"> No residential areas, schools, day care, playgrounds, sports fields within 650 feet of a major road. Polluting point sources regulated locally and by the state or feds. Provide tree canopy to mitigate air pollution. 	<ol style="list-style-type: none"> One after school program and three sports field within buffer area. Substantial residential use and some parks within buffer. 5 polluting sources, only regulated by State of MN, not locally Little tree canopy along Highway 10. 	Reduce the impact of air pollution on children and other Vulnerable populations	<ol style="list-style-type: none"> Plan land uses with populations of children away from major roads. Continue to use local permitting process and state controls to regulate point-source polluters. Encourage the addition of tree canopy along Highway 10 and other future "major roads".

TOPIC	HIA THRESHOLD	CURRENT ACHEIVEMENT	GOAL	POLICY DIRECTIONS
Environment and Housing Quality	Document policies that restrict lead substances in exposed surfaces of dwelling units and other areas inhabited by children.	Lead bearing substances are regulated by the building code consistent with State standards.	Limit or eliminate the use of lead in buildings	<ol style="list-style-type: none"> Continue to use the building code and state regulations to limit the use of lead bearing substances.
Food	Supermarkets and fruit and vegetable stores within 1mile of all residential areas.	6.8% of residential parcels are within a 1mile buffer of existing grocery stores.	Provide at least 50% of residences with walking access to fresh fruit and vegetables	<ol style="list-style-type: none"> Encourage the development of more neighborhood serving grocery Identify and reserve locations suitable for grocery store development
Mental Health	Provide views of green space with canopy trees from all buildings.	39% of streets have canopy cover. A majority of housing has views to green space.	Provide views to green space from new development and establish tree canopy on 50% of streets	<ol style="list-style-type: none"> Use park dedication to increase views to green space. Continue to plan developments with views to open space. Require tree canopy on new streets.